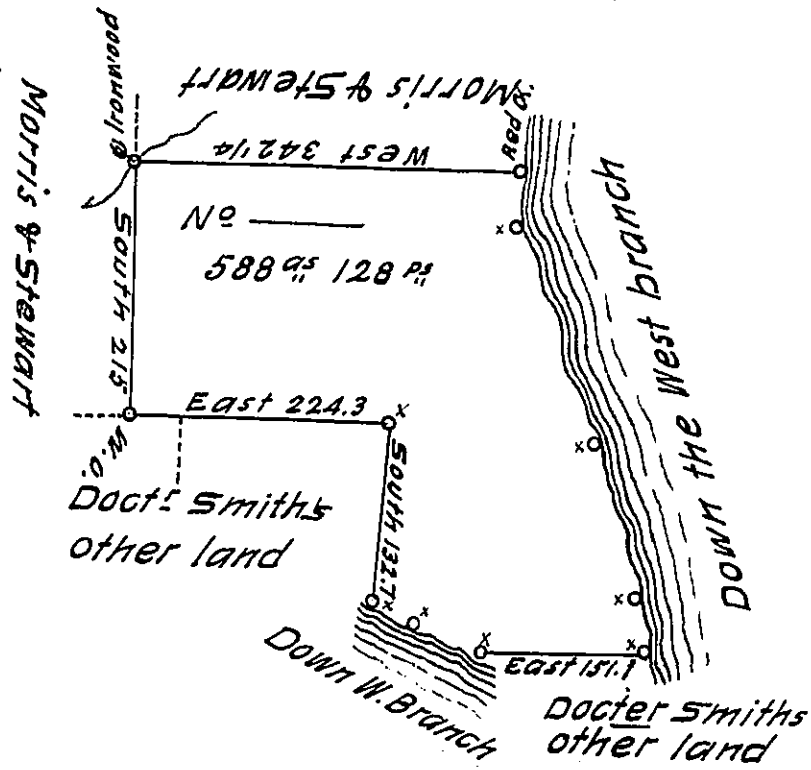


FORM NO. 1.

Courses and distances
down the W. Branch.
N. 70 E. 26
S. 71 E. 63

Courses and distances
down the West branch
from post to red α .
N. 22 W. 50
N. 18 W. 134
N. 25 W. 156
N. 11 E. 45 Red α .



Situate about a mile below the mouth of Big Mushanon in the new purchase No 3 in Northumberland County including a Coal bank containing 588 ac 128 ps and the usual allowance for roads. Survey'd the 26th day of October 1792 in pursuance of a Warrant to Doct: William Smith No 1490 dated the — day of — 1792

John CANAN D.S.

Daniel Broadhead Esquire }
Surveyor General }

IN TESTIMONY that the above is a copy of the original remaining on file in the Department of Internal Affairs of Pennsylvania, made conformably to an Act of Assembly approved the 16th day of February, 1833, I have hereunto set my Hand and caused the Seal of said Department to be affixed at Harrisburg, this eighth day of August 1911

Henry Howell
Secretary of Internal Affairs.